

General Expectations

In your science class this year you will have many opportunities to learn interesting and fun concepts about the universe we live in. You will be involved in laboratory activities, individual/ group activities, and special assignments that may require work outside of school. I will do ALL I can to challenge you and help you achieve your highest goals in science class this year. It is your responsibility to participate in class, complete assignments, and ask for help when needed.



CELL PHONES AND EAR BUDS

Cell phones and ear buds use in class is prohibited unless you have permission from your teacher. Cell phones and ear buds must be stored in backpacks during class time and may not be removed until dismissal.

Welcome to 8th Grade Science

Food



NO food or drinks in class unless the teacher gives it to you! You do not want to accidentally ingest chemicals or potentially expose your classmates to allergens.

Supply List



- ✓ Science Folder
OR space in your binder for science materials
- ✓ College-Ruled Paper
- ✓ Pencils
- ✓ Highlighter
- ✓ Calculator

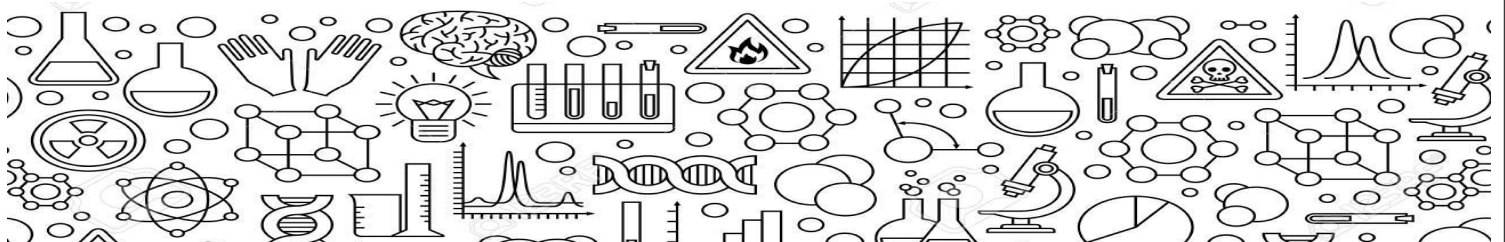
Grading

Your grade will be based on work that assesses student learning (examples: tests, labs, and projects). There will also be separate grades for student engagement (participation), work completion, and utilizing feedback/resources. See the district's new grading guidelines for more information about Standard Based Grading.



Class Materials

Keep everything from class. This includes old tests, graded assignments, homework, projects, etc. Mistakes sometimes occur when grades are recorded and past assignments serve as receipts of completion. Grade changes will NOT occur without this proof.



General Behavior

You are expected to follow school rules: BE SAFE, RESPONSIBLE, RESPECTFUL AND KIND. This includes coming to class on time and being fully prepared.

Our class expectations:

1. Participate in class and NOT interfere with my right to teach.
2. DO NOT interfere with another student's right to learn or safety.
3. Work in collaborative groups and foster inclusion among your classmates.

ANY STUDENT WHO IS EXTREMELY DISRUPTIVE OR WILLFULLY ENDANGERS HIM/HERSELF OR OTHERS, WILL BE IMMEDIATELY SENT TO THE OFFICE.



Cheating

Cheating, whether looking at someone else's test, copying someone else's classwork/homework, or getting advance information about an assignment, is a serious violation. If you are caught cheating, you will lose credit for the assignment. Allowing someone to copy your work is cheating and the same will apply. Warning: We never accept the excuse that "We worked on it together" when the assignment is a mirror image!

Late Work

NO late work from the previous unit will be accepted once the new unit has started.

The Key to Your Success is your Willingness to Try!

Absences

Because of in-class activities that are difficult to make up, absences can adversely affect a student's grade. Alternative assignments can be given for work missed due to an EXCUSED absence but these alternatives are not as valuable as the work in class

All make-up work is the student's responsibility. When you have been absent, check the class website, with your classmates, and/or your teacher to get any work that was missed. Students have as many days as they were absent to make-up missing assignments.



Test Retakes

Retakes are not guaranteed for quizzes or tests. However, if offered, only students below proficiency will be able to retake and must follow the retake procedures. Changes to the retake policy are at the discretion of the science department.



Class Resources

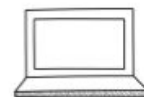
Website: <http://mrsconnors.science>, mrsburgessscience.weebly.com OR corresponding Google Classroom

Email and Phone Contacts

Mrs. Connors – jconnors@rcsdk8.org, 771-1740 x- 155

Mrs. Burgess - kburgess@rcsdk8.org, 771-1740 x -156,

Instagram = @cooleyburgess



\$10 Lab Fee Donation

In an effort to bring the best curriculum to your child, Cooley science incorporates the use of hands-on activities whenever possible. Many of the activities use consumable items that need to be replenished frequently. **We ask for a \$10 donation from each student** to help with the cost of labs, consumables and equipment. Cash or checks are accepted. Please make checks payable to Cooley Middle School. Thank you in advance for your support!

Name: _____

Period: _____

Parent & Student Signature Page

****THIS IS YOUR FIRST HOMEWORK ASSIGNMENT!**

DUE: August 16th

Please sign below to indicate that you understand ALL of the information from the syllabus and will follow ALL of the rules presented.

Return this page and your \$10 Science Donation to your science teacher.

Failure to sign and return this form may result in a student not being able to participate in laboratory activities.

Student Signature: _____

Guardian Signature: _____

Do you have any questions about the syllabus? _____

You know your student better than anyone. If there is any information you would like to share about your son/daughter please do so below. I look forward to getting to know your child this year.
