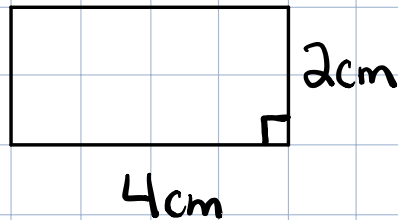


11/26/18

Be able to solve problems with area of parallelograms, triangles, and trapezoids.

Rectangles



$$A = lw$$

$$A = 4(2)$$

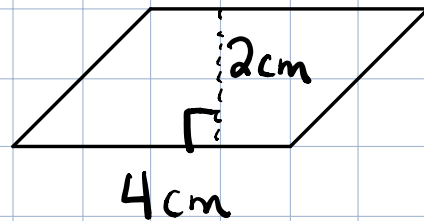
$$A = 8 \text{ cm}^2$$

Parallelogram

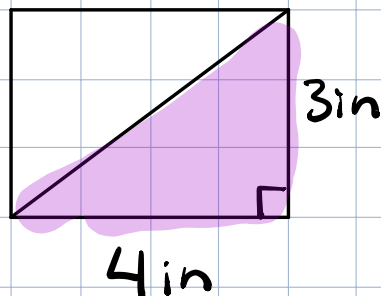
$$A = bh$$

$$A = 4(2)$$

$$A = 8 \text{ cm}^2$$



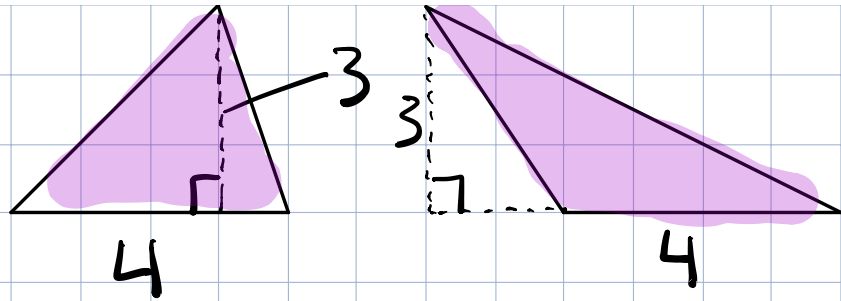
Triangles



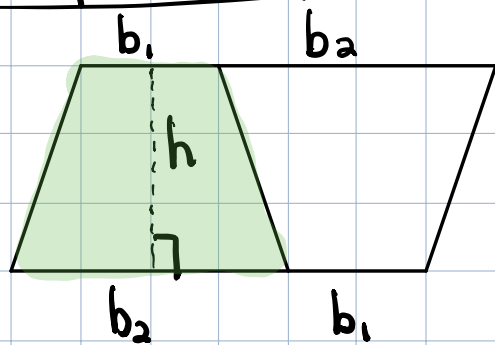
$$A = \frac{1}{2}bh$$

$$A = \frac{1}{2}(4)(3)$$

$$A = 6 \text{ in}^2$$

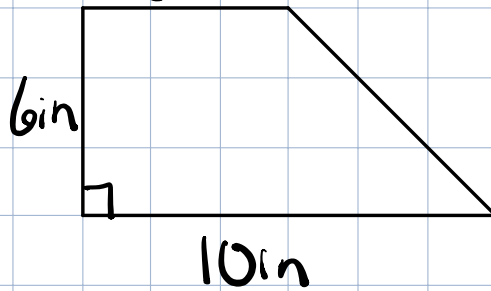


Trapezoids



$$A = \frac{1}{2}h(b_1 + b_2)$$

$$A = \frac{1}{2}h(b_1 + b_2)$$



$$A = \frac{1}{2}(6)(5 + 10)$$

$$A = 45\text{ in}^2$$