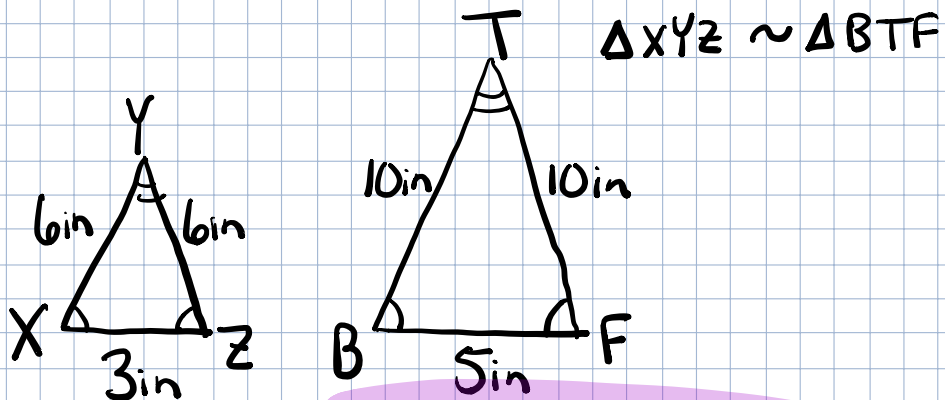


10/15/18

Be able to solve problems using  
Scale factor.

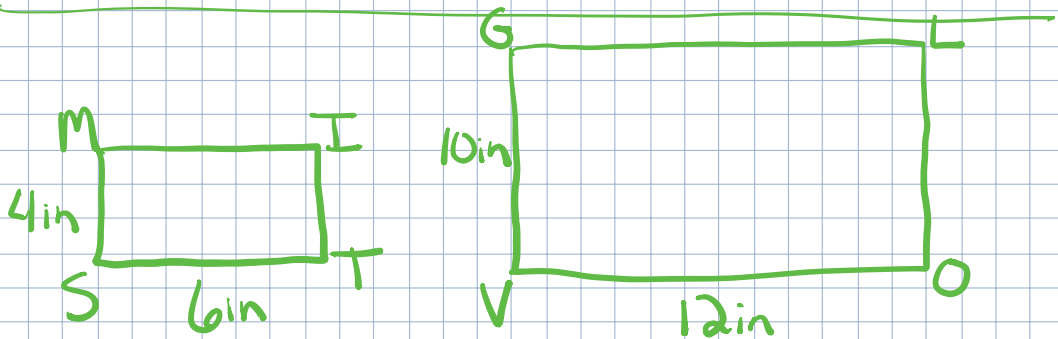
Figures are similar if:

- Same shape
- Corresponding angles are congruent
- Corresponding sides are proportional



$$\frac{\overline{XY}}{\overline{BT}} = \frac{6}{10} = \frac{3}{5}$$

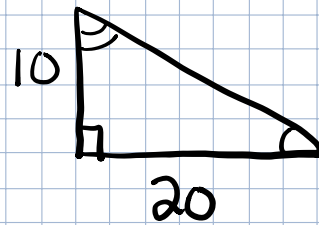
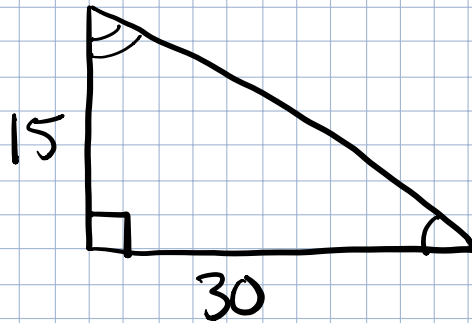
Scale factor = ratio of  
corresponding sides



Are they similar?

$$\frac{4}{10} \stackrel{?}{=} \frac{6}{12}$$

not proportional  
not similar



$$\text{Scale factor} = \frac{15}{10} = \frac{3}{2}$$