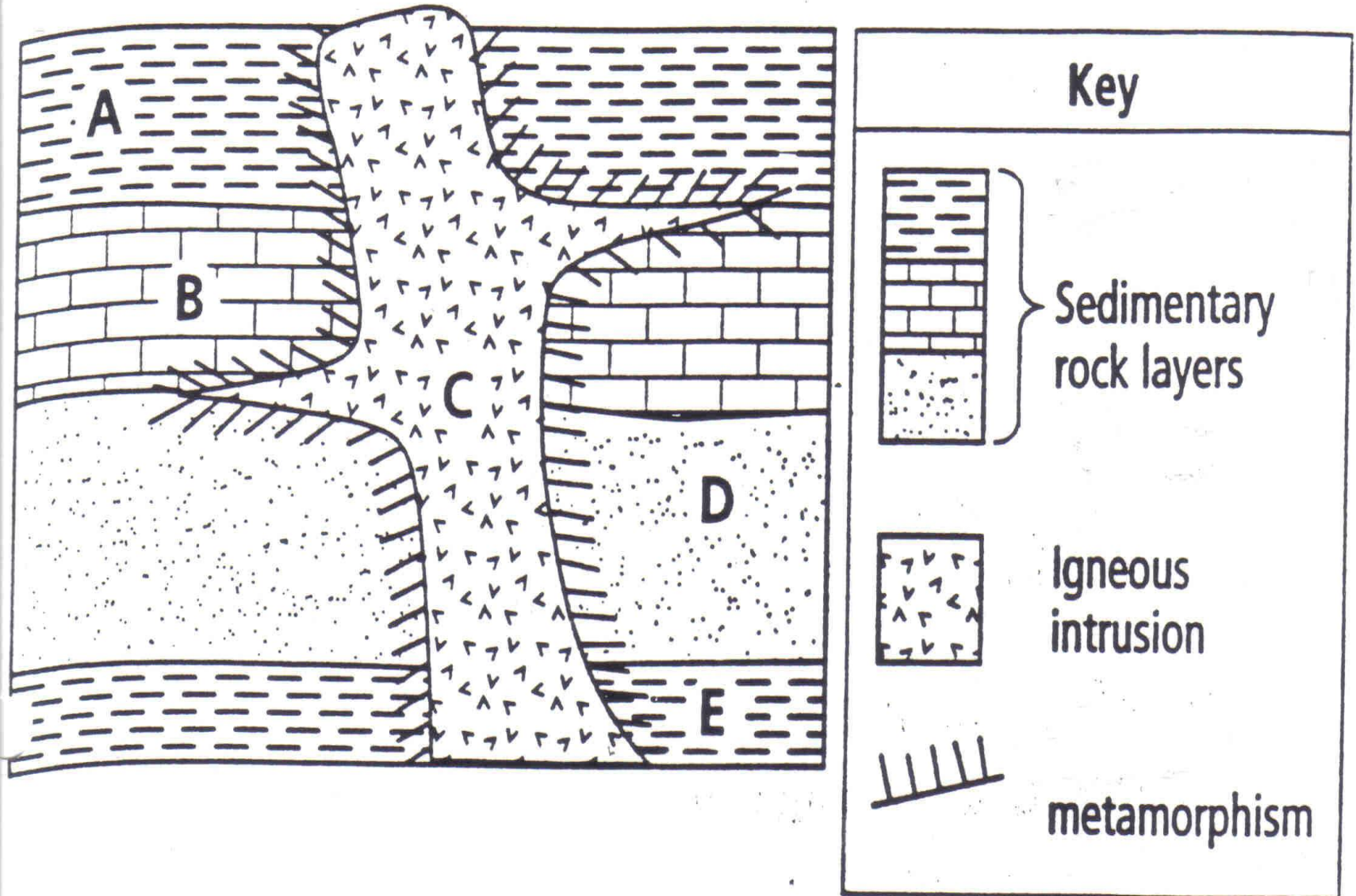


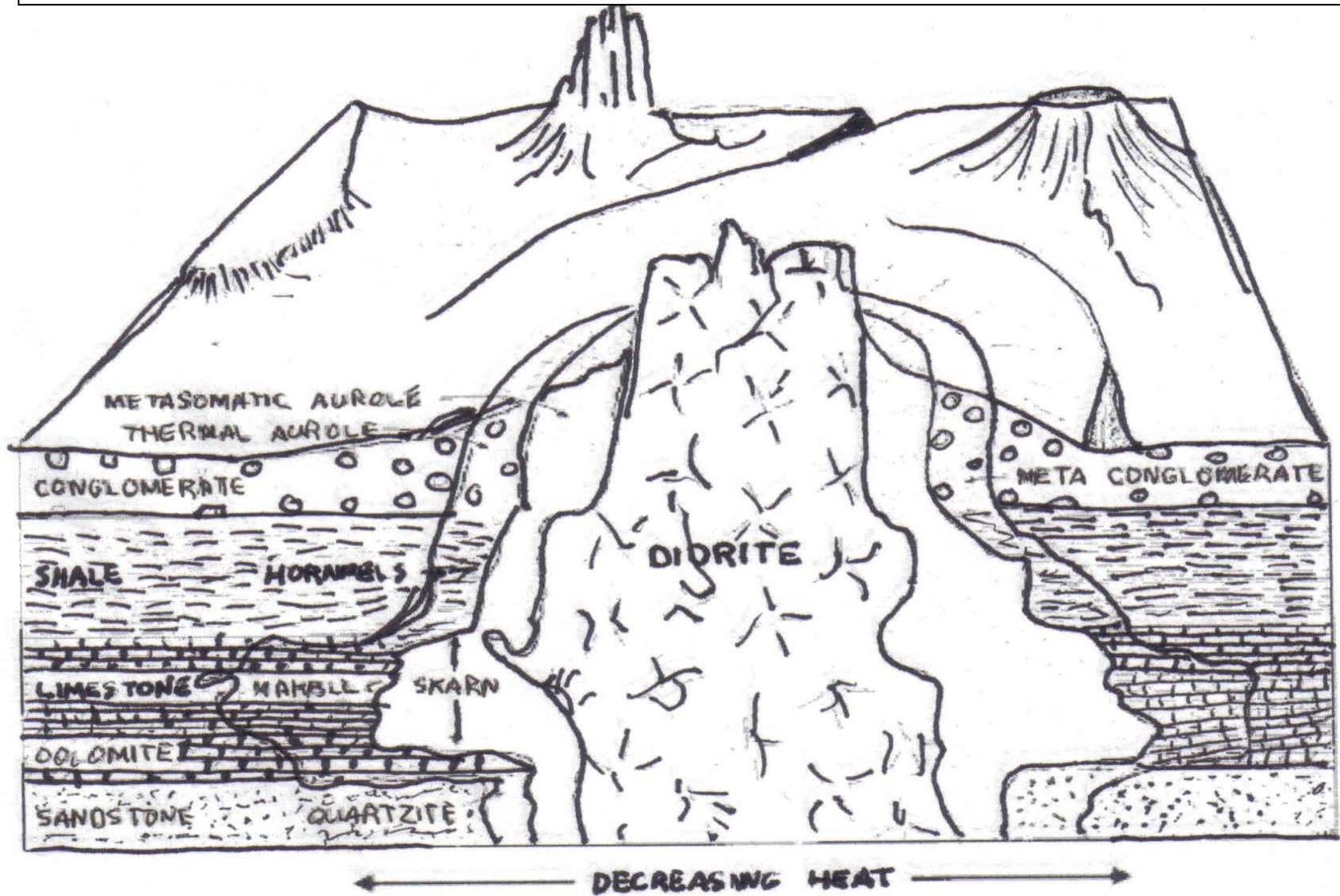
Coloring METAMORPHIC rock STRATA Activity

DIRECTIONS: COLOR each strata accordingly. This includes the metamorphic layers surrounding the igneous intrusion.



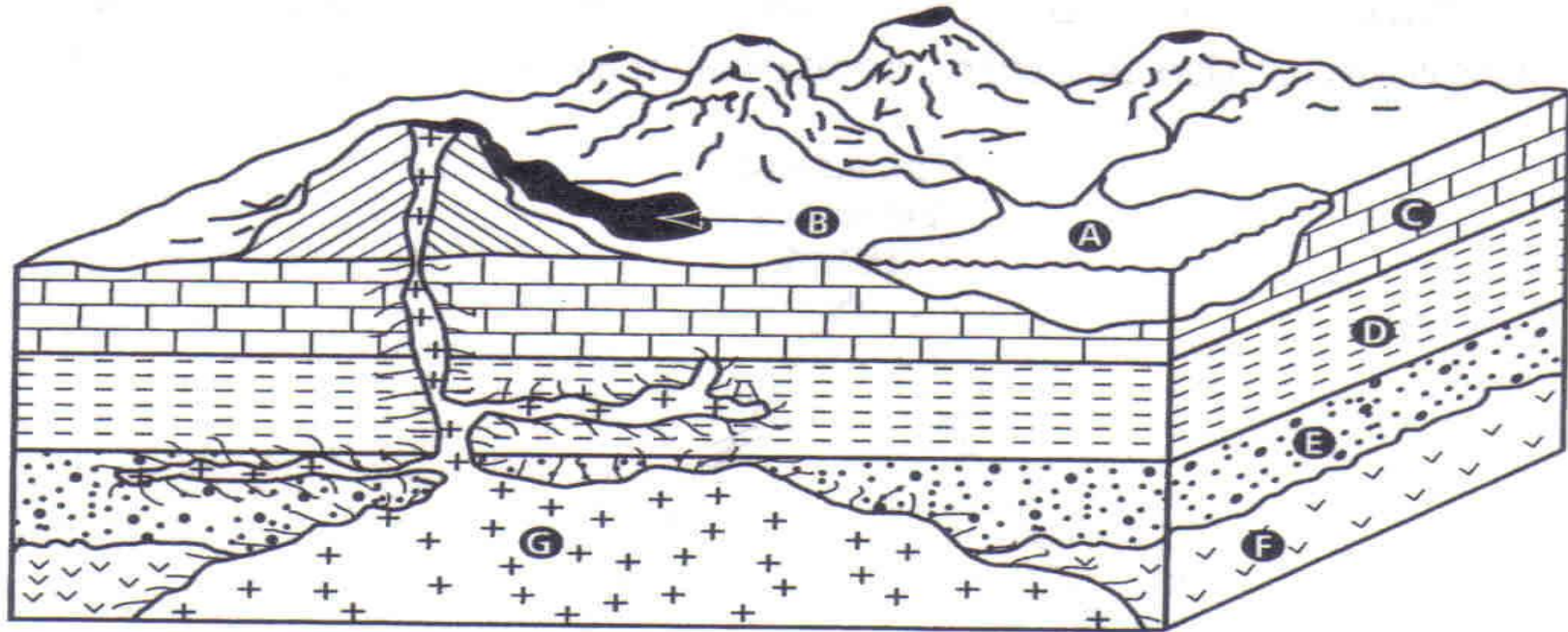
Coloring METAMORPHIC rock STRATA Activity

DIRECTIONS: COLOR each strata accordingly. Assume the rocks have not been overturned. Each of the metamorphic rocks needs to be another color. DO NOT FORGET to color the surface of the illustration.

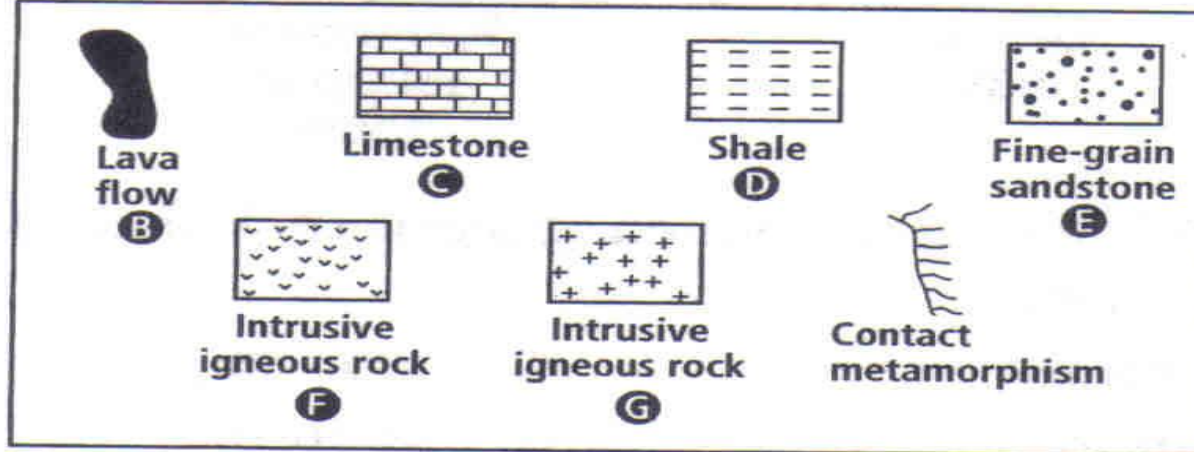


Coloring METAMORPHIC rock STRATA Activity

DIRECTIONS: Using the Law of Superposition. COLOR each strata accordingly. Each of the metamorphic rocks needs to be colored also. DO NOT FORGET to color the surface of the illustration. Assuming the rocks have not been overturned, label the youngest to oldest rock layer by using the correct letter

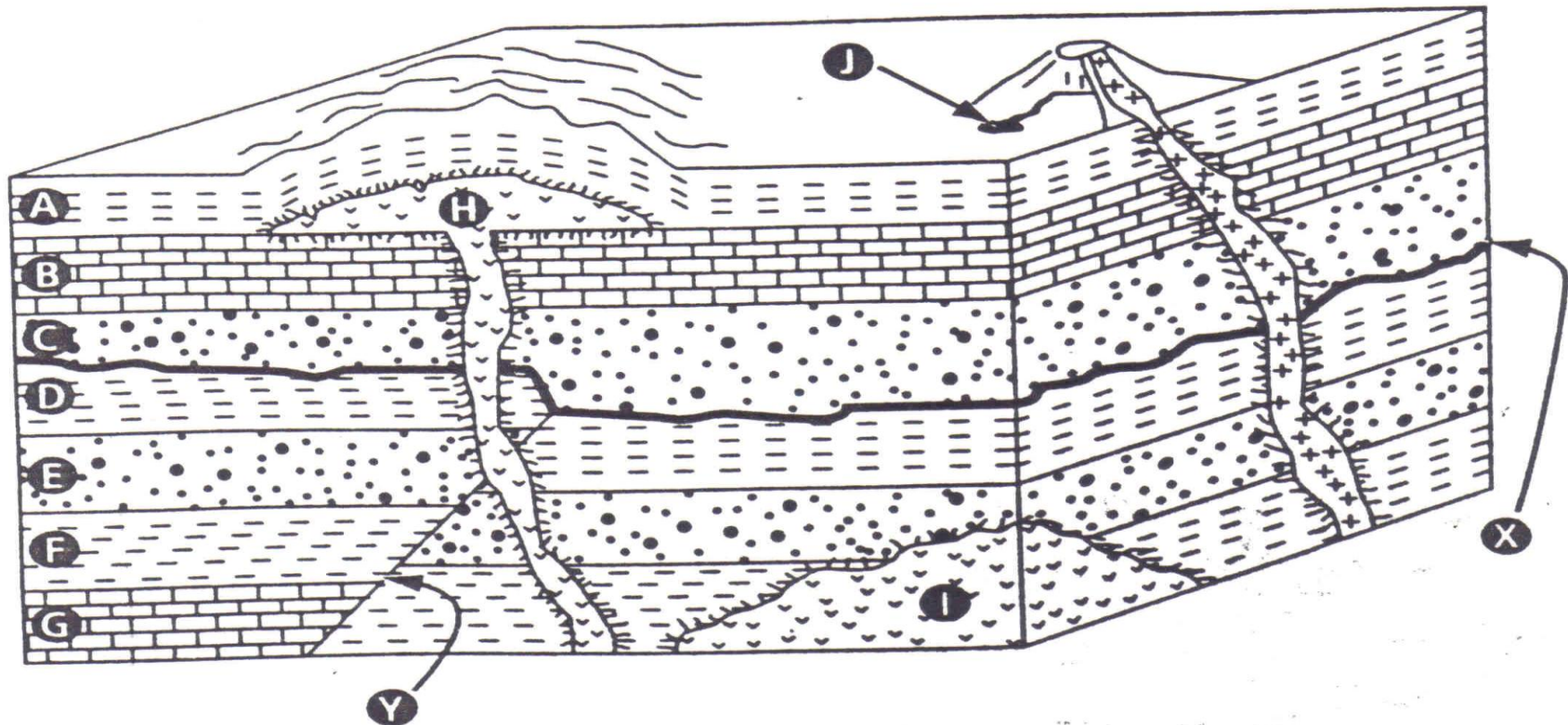


KEY



Coloring METAMORPHIC rock STRATA Activity

DIRECTIONS: Using the Law of Superposition. **COLOR** each strata accordingly. Each of the metamorphic rocks needs to be colored also. **DO NOT FORGET** to color the surface of the illustration. Assuming the rocks have not been overturned, **label the youngest to oldest rock layer by using the correct letter**



KEY

